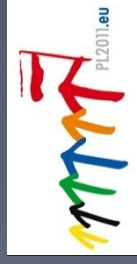
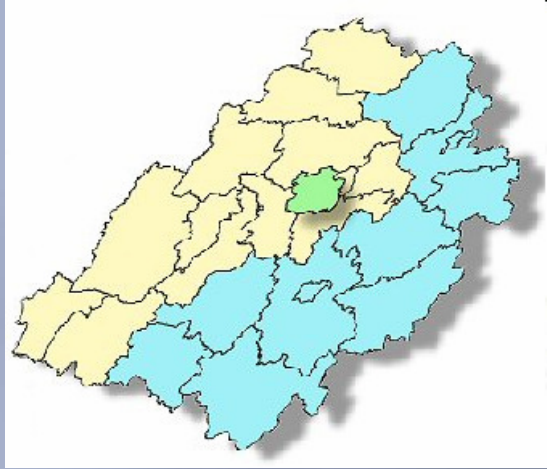


Urząd Miasta Łodzi

Cities for
Children

WG 5 Generation Dialogue Meeting 12-13.12.2011 City of Łódź





Łódź and the region location

- ❑ Łódź region includes areas of the central Poland.
- ❑ Its surface is **18219 km²** , which represents 5,8% of the whole country.
- ❑ The surface of the city is **294 km²**
- ❑ It is the 9th – largest province in Poland.
- ❑ There are 42 tpwns in the Łódź province and 5181 villages.
- ❑ According to statistics, in the Łódź region residents over 2,5 mln people, of which the inhabitants of the city of Łódź are about 738 thousand inhabitants.

Łódź in a nutshell

- ❑ Łódź was one of the major centers of the textile industry in the world.
- ❑ It is nowadays an important scientific and cultural center with 23 universities and numerous research institutes.
- ❑ Łódź is the second city after Warsaw, with the great medical center in Poland. There are 22 hospitals, 4 clinics, well known – Polish Mother's Health Center and Medical University.
- ❑ As the cinematography center Łódź is well – known throughout the world and many outstanding Polish actors and directors are graduates of „the Łódź Film School”. In the city operates 11 theaters and 2 puppet theaters, the second largest in Poland – the Grand Theater, Music Theater and the National Concert Hall.
- ❑ There are also: the famous Museum of Art., with the largest collection of modern art., and unique, the only one in Poland, Central Textile Museum and the Museum of Cinematography.

Łódź in a nutshell

- ❑ The cultural values of Łódź enriches the list of 1113 of historic buildings, mainly from the nineteenth century, often unique in the country. There are, among others 74 industrial buildings, 115 public buildings, 134 palaces and villas, 25 churches and 11 other sacral objects and 631 homes and townhouses, 35 parks and 148 green areas.
- ❑ In the city are situated also the radio station, TV center, zoo and botanical garden along with the most modern in Poland, the Palm House.
- ❑ There is also possibility in Łódź, to spend the time in Europe's largest park (forest complex in Łagiewniki), to use the services of the Centre for Leisure and Water, "Stefanski Ponds," which includes features such as sailboats and personal watercraft.
- ❑ The city has also the Władysław Reymont International Airport.
- ❑ Piotrkowska - one of the longest streets in Europe with a huge number of pubs and restaurants.

Palaces in Łódź



Robert Schweikert



Ludwik Grohman



Robert Biedermann



Karol Scheibler



Izrael Poznański



Edward Herbst



Juliusz Heinzel



Franciszek Kindermann



Oskar Kon

Factories



Factory of Markus Silberstein



White Factory of Ludwik Geyer
- nowadays Textile Museum



Factory of Józef Balle



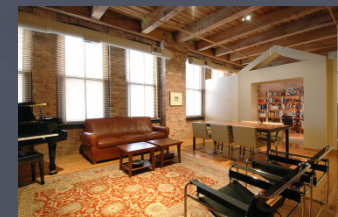
Factory of Izrael Poznański
– nowadays Manufaktura



Renovation of the Factory of Izrael
Poznański - nowadays Hotel Andel's

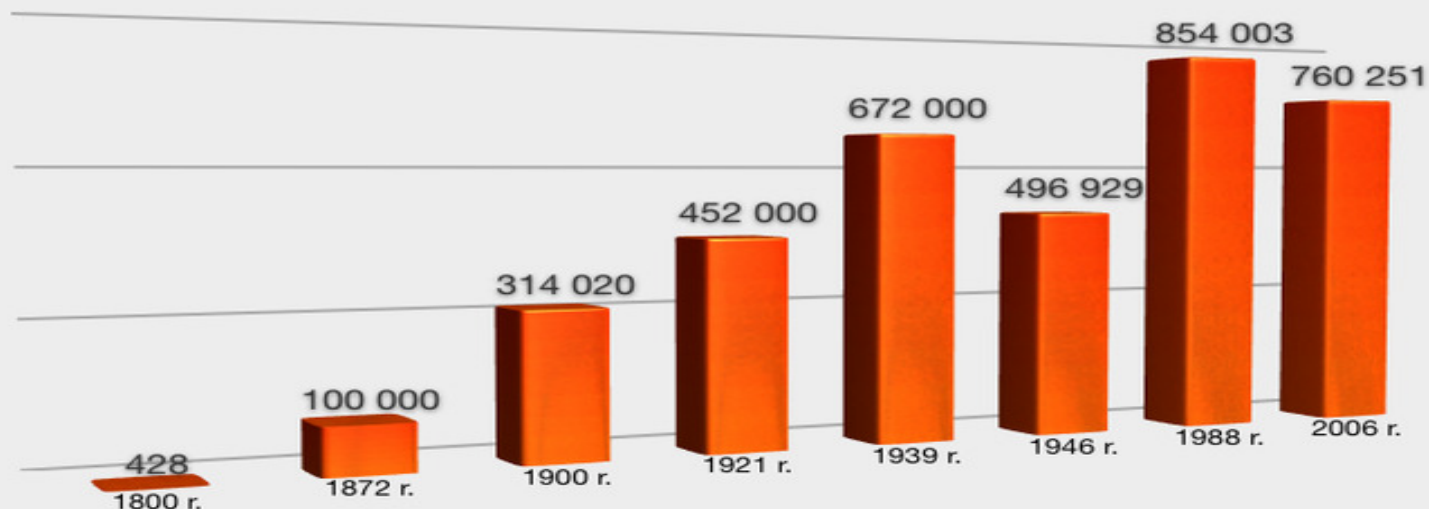


Factory of Karol Scheibler
- nowadays Lofts



Demographic indications of the City of Łódź Demographic development of Łódź in 1800 – 2006

Rozwój demograficzny miasta Łodzi
w latach 1800-2006.



Dane na podstawie:

1939-1979 Roczniki statystyczne GUS, 1980-1994 Roczniki demograficzne GUS, 1995-2006 Bank danych regionalnych GUS

Łódź loses annually over 5 thousand people. The city has currently 737 098 of residents, it is 114 419 less than in 1988, when we boasted with the largest so far of their number.

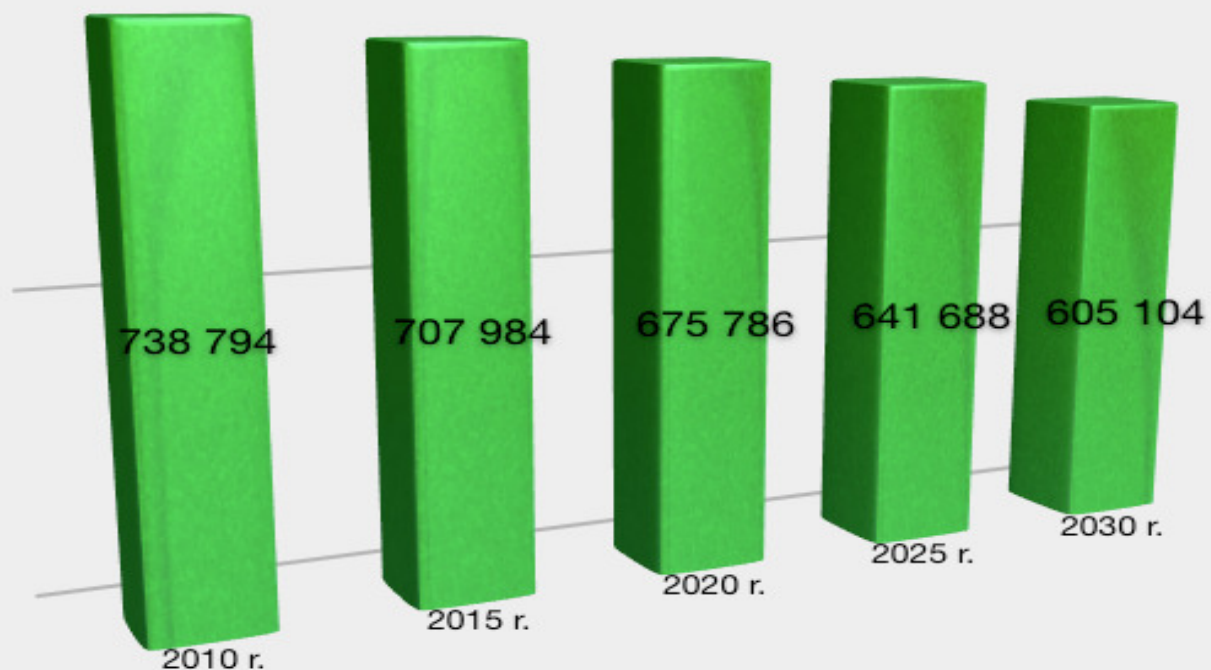
Demographic indicators of the City of Łódź Birthrate in 1985-2005



Our city is getting older and depopulating. Since 1985, we observe a negative natural increase (Łódź was the first large city in which it has occurred) – more people die than are born, although recently the number of the children coming into the world – slightly increased. In 2010 6651 children were born, it is 640 more than 5 years ago.

Demographic indicators of Łódź
Prognosis of the population of the city of Łódź
In 2010 - 2030

Prognoza liczby ludności miasta Łodzi
na lata 2010-2030.



Dane na podstawie:

Włodzimierz Obraniak, "Ludność Łodzi i innych wielkich miast w latach 1984-2006", Urząd Statystyczny w Łodzi.

Demographic situation and prognosis for the future

- ❑ Demographic situation of Łódź is still comparatively difficult.
- ❑ The percentage of the people after working age is the highest among the surveyed cities (21,2%), while simultaneously the lowest ratio of births (8,8 children per 1000 inhabitants).
- ❑ Two years ago Łódź stopped to be the second largest city in Poland, and its place was taken by Kraków. Demographers and statisticians agree to the fact that there is a little chance to change that in the near future.
- ❑ The strength of the city is still favourable labour market, fostering the investors – taking into account the location of the city and pay conditions prevailing in Łódź, who are more likely to locate their investments there.

The reasons

- ❑ Changes in the family model – women in Łódź decide usually to have only one child.
- ❑ Women bringing up their children alone or in informal relationships, they often have to concentrate on work and have difficulties with keeping the family.
- ❑ Since 2003 – negative balance of migration – more people leave Łódź, than settle on a permanent stay (young people leaving to work abroad or to other Polish cities such as Warsaw, where development prospects and job opportunities are more attractive).

Łódź schools activities in the field
of intergenerational dialogue
on the example of the Primary
School No. 111 in Łódź